

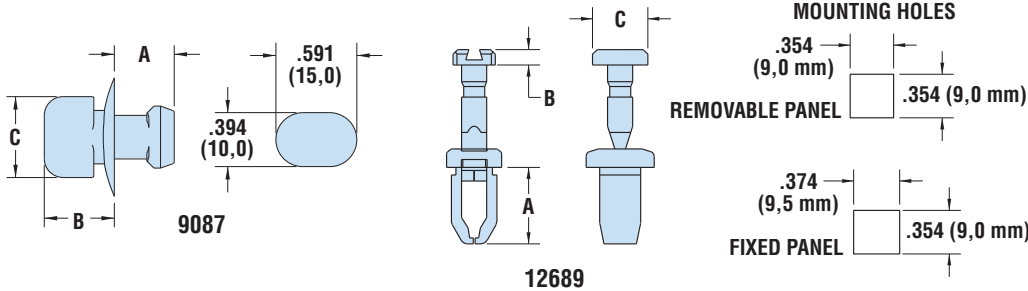


HEYClip™ Nylon Snap Lock Pins

MOUNTING HOLE DIA.		ASSEMBLED PANEL THICKNESS		PART NO.	DESCRIPTION	PART DIMENSIONS							
in.	mm.	in.	mm.			A Length		B Clip Dia.		C Head Dia.		D Head Height	
				Natural		in.	mm.	in.	mm.	in.	mm.	in.	mm.
SLP1 Series - Flush Head													
.098	2,5	.177	4,5	12040	SLP1-177	.26	6,6						
		.221	5,6	12041	SLP1-221	.30	7,6						
		.236	6,0	12042	SLP1-236	.31	7,9						
		.245	6,2	12043	SLP1-245	.32	8,1						
		.307	7,8	12044	SLP1-307	.39	9,9						
		.316	8,0	12045	SLP1-316	.40	10,0	.09	2,4	.20	5,1	.05	1,3
		.330	8,4	12046	SLP1-330	.41	10,4						
		.413	10,5	12047	SLP1-413	.49	12,4						
		.638	16,2	12048	SLP1-638	.72	18,3						
		.660	16,8	12049	SLP1-660	.74	18,8						
.701	17,8	12050	SLP1-701	.78	19,8								

MOUNTING HOLE DIA.		ASSEMBLED PANEL THICKNESS		PART NO.	DESCRIPTION	PART DIMENSIONS							
in.	mm.	in.	mm.			A Length		B Clip Dia.		C Head Dia.		D Head Height	
				Natural		in.	mm.	in.	mm.	in.	mm.	in.	mm.
SLP100 Series - Lip Under Head ALL NEW!													
.098	2,5	.177	4,5	12051	SLP100-177	.26	6,6						
		.221	5,6	12052	SLP100-221	.30	7,6						
		.236	6,0	12053	SLP100-236	.31	7,9						
		.245	6,2	12054	SLP100-245	.32	8,1						
		.307	7,8	12055	SLP100-307	.39	9,9						
		.316	8,0	12056	SLP100-316	.40	10,0	.09	2,4	.20	5,1	.06	1,5
		.330	8,4	12057	SLP100-330	.41	10,4						
		.413	10,5	12058	SLP100-413	.49	12,4						
		.638	16,2	12059	SLP100-638	.72	18,3						
		.660	16,8	12060	SLP100-660	.74	18,8						
.701	17,8	12061	SLP100-701	.78	19,8								

Standard color natural. Consult Heyco for black and other colors.



HEYClip™ Turn Fastener

WILL FIT THESE PANELS					PART NO.	DESCRIPTION	PART DIMENSIONS						
MOUNTING HOLE		ASSEMBLED PANEL THICKNESS					Black	A Length		B Head Height		C Head Length	
in.	mm.	Min.	Max.	in.	mm.	in.		mm.	in.	mm.	in.	mm.	
.39 x .59	10,0 x 15,0	.24	6,0	.28	7,0	9087	TF 394-236	.44	11,1	.51	13,0	.59	15,0
see schematic		.09	2,4	.11	2,7	12689	TF 354-354	.48	12,2	.13	3,2	.45	11,4 NEW!

Standard color black.

HEYClip™ Nylon Pawl Lock

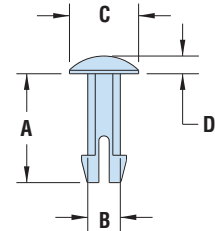
MOUNTING HOLE DIA.	PART NO.	DESCRIPTION	PART DIMENSIONS						
			A Length		B Head Height		C Head Diameter		
in.	mm.	Natural	in.	mm.	in.	mm.	in.	mm.	
.250	6,4	10676	HPL - 1	.63	15,9	.08	2,0	.50	12,7

Standard color as shown.

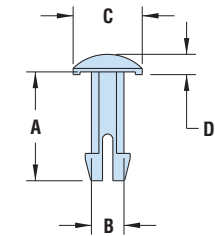
Material	Nylon 6/6
Flammability Rating	94V-2
Temperature Range	-4°F (-18°C) to 185°F (85°C)



- Used to fix connectors to the printed circuit board prior to wave soldering.



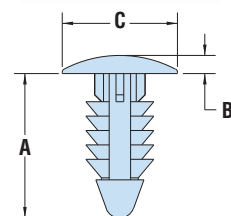
SLP1 Series



SLP100 Series



- Part Description Key:
TF X-YYY where XXX = Mounting Hole Diameter (inches) and YYY = minimum Panel Thickness (inches)



HPL-1 Series